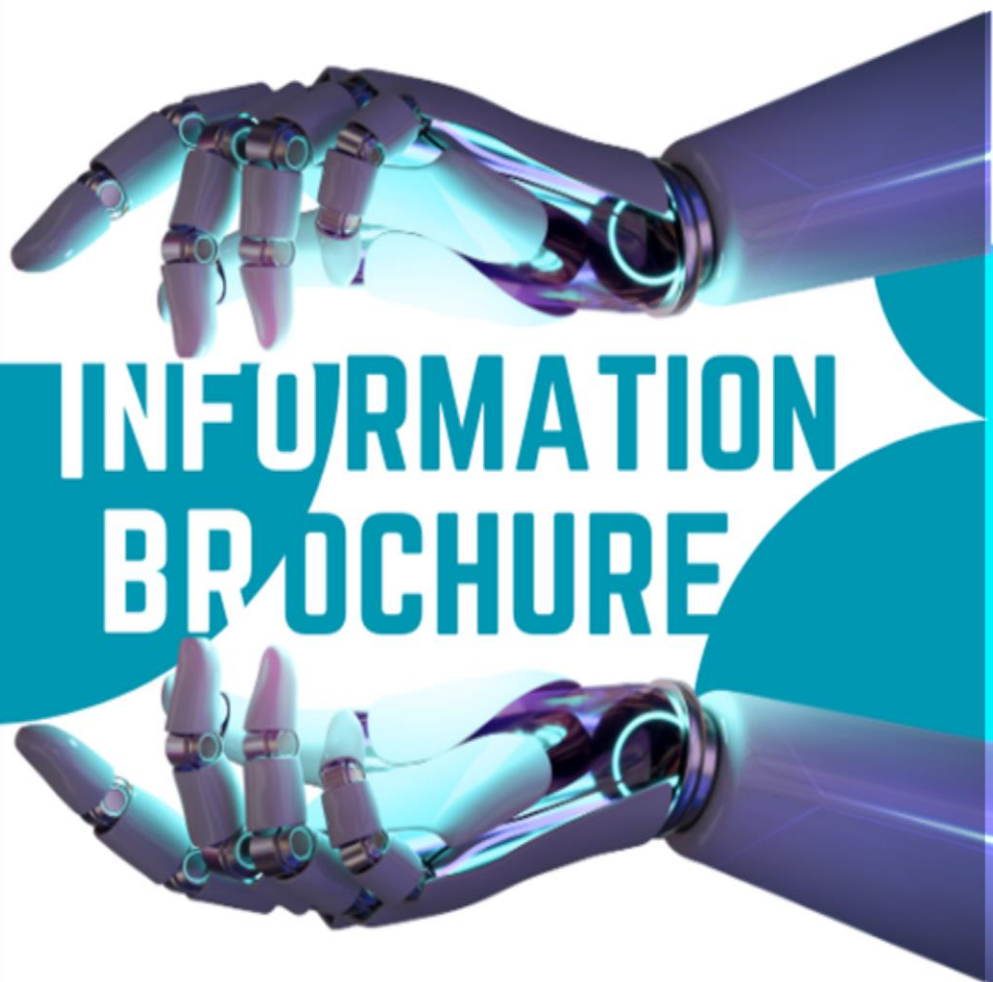




Welcome to A E P Study Circle, a distinctive and unparalleled destination for students aspiring to excel in IIT-JEE, NEET, and CBSE exams. Our Institute is committed to providing a holistic and comprehensive learning environment that nurtures academic excellence and fosters a passion for continuous learning.

YOUR GATEWAY TO EXCELLENCE IN
IIT-JEE, NEET AND CBSE EXAMS



INFORMATION BROCHURE



CONTACT US:

+91-9939586130
+91-9955930311



www.aepstudycircle.com



aepstudycircle@gmail.com

2ND FLOOR, SATKOURI COMPLEX, THANA CHOWK,
RAMGARH - 829122-JH





"A E P STUDY CIRCLE, established in 2001, is a renowned educational institute led by a team of highly qualified and record-breaking result oriented professionals. With expertise in preparing students for competitive exams like IIT-JEE, NEET, and CBSE, our faculty members boast extensive experience of more than 20-25 years in the field of education. Committed to excellence and student success, we provide comprehensive coaching and guidance to help students achieve their academic goals and excel in their chosen examinations."

YOUR GATEWAY TO EXCELLENCE IN IIT-JEE, NEET AND CBSE EXAMS



➤ ABOUT US

At A E P Study Circle, we offer comprehensive classroom programs for IIT -JEE, NEET, CBSE-BOARD students to excel in their academics and competitive exams. Our programs are designed to provide thorough subject knowledge, practical skills, and exam-oriented preparation.

Benefits:

- Strong foundation in core subjects
- Enhanced problem-solving and critical thinking skills
- Improved academic performance in CBSE board exams
- Better preparedness for competitive entrance exams like JEE Main, NEET, etc.
- Overall personality development and leadership skills enhancement.

➤ FEATURES AND HIGHLIGHTS

1. **Experienced Faculty:** Our institute boasts a team of experienced and dedicated faculty members who are subject matter experts in their respective fields. They provide personalized attention and guidance to students to ensure their academic success.
2. **Well-Structured Curriculum:** The classroom programs are designed following the latest IIT -JEE -NEET- CBSE syllabus, covering all essential topics and concepts in-depth. The curriculum is regularly updated to align with changing exam patterns and requirements.
3. **Interactive Learning Environment:** We foster an interactive and engaging learning environment where students actively participate in discussions, solve problems collaboratively, and clarify doubts with teachers.
4. **Comprehensive Study Material:** Students receive meticulously curated study material, including textbooks, reference books, and practice papers, to supplement their classroom learning and facilitate self-study.





YOUR GATEWAY TO EXCELLENCE IN IIT-JEE, NEET AND CBSE EXAMS

OUR MISSION:



At AEP Study Circle, our mission is to empower students with the knowledge, skills, and confidence to excel academically and achieve their aspirations in the competitive world of education. We are committed to providing a nurturing learning environment, innovative teaching methodologies, and personalized guidance that fosters holistic development and instills a lifelong love for learning.

5. **Regular Assessments:** Continuous evaluation is a key aspect of our classroom programs. We conduct regular unit tests, periodic assessments, mock exams, and quizzes to gauge students' understanding and track their progress over time.
6. **Doubt Resolution Sessions:** Dedicated doubt resolution sessions are organized to address students' queries and misconceptions. Teachers provide detailed explanations and extra support to ensure students have a clear understanding of the topics.
7. **Parent-Teacher Collaboration:** We believe in fostering strong communication and collaboration between parents, teachers, and students. Regular parent-teacher meetings are conducted to discuss students' academic performance, strengths, and areas for improvement.
8. **Holistic Development:** Apart from academic excellence, our classroom programs focus on the holistic development of students. We encourage extracurricular activities, leadership initiatives, and personality development workshops to nurture well-rounded individuals.

➤ FACULTY-TEAM

Our IIT-NEET-CBSE classrooms boast a team of exceptional faculty members specializing in Physics, Chemistry, Mathematics, English, Computer Science, and Biology. Each faculty member is a subject matter expert with years of teaching experience and a proven track record of guiding students to success in the IIT-NEET- CBSE examination. Our Physics faculty brings clarity to complex concepts, our Chemistry faculty makes abstract theories tangible, and our Mathematics faculty simplifies intricate problems. Together, they provide comprehensive instruction, personalized attention, and strategic guidance to ensure students are well-prepared and confident to tackle the challenges of the IIT-NEET-CBSE exam.





YOUR GATEWAY TO EXCELLENCE IN IIT-JEE, NEET AND CBSE EXAMS



EXECUTIVE DIRECTOR



SHALU SINHA



Dear Parents and Students,

It is with great pleasure that I extend a warm welcome to you to A E P Study Circle. As the Director of our esteemed institute, I am thrilled to be part of a community dedicated to excellence in education and student development.

At A E P Study Circle, our mission is to empower students with knowledge, skills, and confidence to excel in their academic pursuits and beyond. With a team of highly qualified faculty members, cutting-edge infrastructure, and a student-centered approach to learning, we are committed to providing a holistic education that prepares students for success in today's competitive world.

Our focus is not only on academic excellence but also on character building, leadership development, and fostering a spirit of innovation and inquiry. We believe in nurturing each student's unique talents and strengths, and providing them with opportunities to explore their interests and passions.

As we embark on this journey together, I invite you to discover the endless possibilities that await you at A E P Study Circle. With our unwavering commitment to your success and our dedication to excellence, I am confident that together, we can achieve great heights.

Warm regards,

Mrs. Shalu Sinha
Director
A E P Study Circle





YOUR GATEWAY TO EXCELLENCE IN IIT-JEE, NEET AND CBSE EXAMS



DIRECTOR ACADEMICS

Dear Parents and Students,

It gives me immense pleasure to welcome you to A E P Study Circle, where we are dedicated to providing top-quality education and shaping the future of our students. As the Academic Director, I am committed to ensuring that every student who walks through our doors receives the guidance, support, and resources they need to excel academically and personally.

At A E P Study Circle, we believe in nurturing the potential of each student and fostering a culture of excellence. Our team of experienced faculty members, state-of-the-art facilities, and innovative teaching methodologies are geared toward empowering students to achieve their goals and realize their dreams.

We understand each student is unique, so we offer personalized attention and support to cater to their learning needs. Whether it's preparing for competitive exams like IIT-JEE, NEET, or excelling in CBSE board examinations, our comprehensive curriculum and rigorous training ensure that our students are well-prepared to face any academic challenge.

Our commitment to excellence extends beyond academics. We strive to instill in our students the values of integrity, discipline, and perseverance, equipping them with the skills and mindset needed to succeed not just in exams but in life.

I invite you to embark on this journey with us and experience the difference that A E P Study Circle can make in your academic and personal growth. Together, let's unlock your full potential and pave the way for a bright and successful future.

Best wishes,

Mr. N. Sinha
Academic Director
A E P Study Circle



N. SINHA





YOUR GATEWAY TO EXCELLENCE IN IIT-JEE, NEET AND CBSE EXAMS

OUR VISION

At AEP Study Circle, our vision is to redefine education by empowering students to achieve their full potential and become leaders in their fields. We envision a future where every student receives personalized attention, innovative teaching, and holistic support to excel academically, professionally, and personally. We believe in catering to the individual needs and learning styles of each student. Our vision is to provide personalized learning plans, tailored mentoring, and customized resources to help students maximize their strengths and overcome their weaknesses.



STUDY MODULE IIT-JEE AND NEET

At AEP Study Circle, we believe in empowering students with the finest study materials designed to elevate their preparation for the IIT-JEE and NEET exams. Our meticulously crafted study materials are curated by experienced educators to ensure comprehensive coverage of the syllabus and facilitate effective learning.

Key Features of Our Study Materials:

1. **Comprehensive Coverage:** Our study materials encompass the entire syllabus of IIT-JEE and NEET, meticulously organized into chapters and topics for systematic learning.
2. **Conceptual Clarity:** Dive deep into fundamental concepts and principles with our study materials, which offer clear explanations, illustrative examples, and insightful problem-solving techniques.
3. **Practice Questions:** Reinforce your understanding and hone your problem-solving skills with a wide range of practice questions, including conceptual questions, numerical problems, and previous years' questions.
4. **Mock Tests and Sample Papers:** Familiarize yourself with the exam pattern and enhance your exam readiness with our collection of mock tests and sample papers designed to simulate the real exam environment.
5. **Revision Notes:** Access concise and well-structured revision notes that summarize key concepts, formulas, and important points from each chapter, facilitating quick revision before exams.
6. **Visual Aids:** Engage with visual aids such as diagrams, charts, and illustrations incorporated into our study materials to enhance comprehension and retention of complex topics.
7. **Online Accessibility:** Enjoy the flexibility of accessing our study materials online, allowing you to study anytime, anywhere, and on any device of your choice.
8. **Regular Updates:** Stay updated with the latest exam trends, syllabus changes, and important announcements through our regularly updated study materials.

With our comprehensive study materials, you'll have everything you need to embark on a successful journey towards cracking the IIT-JEE and NEET exams.





YOUR GATEWAY TO EXCELLENCE IN IIT-JEE, NEET AND CBSE EXAMS

OUR TARGET



Empowering Students for
Academic Excellence! 🎯

At AEP Study Circle, our primary goal is to empower students with the knowledge, skills, and confidence needed to excel academically and achieve their goals. We are committed to providing comprehensive educational resources, personalized guidance, and a supportive learning environment to help students reach their full potential.



STUDY MODULE CBSE (XIITH -VIIIITH)

Our institute provides a comprehensive study module tailored to the CBSE curriculum for students in the XIIth- to VIIIth grades. Study modules are designed to enhance conceptual understanding, critical thinking skills, and overall academic performance.

Key Features:

- Curriculum Coverage:** The study module covers the entire CBSE syllabus for classes XII-VIII, across all subjects, including Physics, Chemistry, Biology, Mathematics, English, and other elective subjects.
- Structured Learning Material:** Students receive well-organized study material comprising textbooks, reference books, notes, and practice papers. Experienced educators curate the material to facilitate easy understanding and effective learning.
- Interactive Teaching Methods:** Our faculty members employ interactive teaching methods such as lectures, discussions, presentations, and multimedia aids to engage students actively in the learning process. This fosters deeper comprehension and retention of concepts.
- Regular Assessments:** Continuous evaluation is conducted through regular tests, quizzes, assignments, and mock exams. These assessments help identify students' strengths and areas for improvement, enabling personalized attention and support.
- Doubt Resolution Sessions:** Dedicated doubt resolution sessions are organized to address students' queries and misconceptions. Experienced teachers provide individualized assistance and guidance to ensure clarity of concepts.
- Performance Tracking:** The progress of students is monitored closely through periodic performance tracking. Feedback on academic performance is provided to students and parents to track progress and set realistic goals.





OUR PROSPECTS:

At AEP Study Circle, we envision a future where every student has the opportunity to unlock their full potential and achieve academic success beyond measure. With a relentless commitment to excellence, innovation, and personalized learning, we aspire to shape the leaders, innovators, and change-makers of tomorrow. Our foremost aim is to establish AEP Study Circle as a beacon of academic excellence, renowned for producing top-ranking students in prestigious competitive exams such as IIT-JEE, NEET, and CBSE boards. We envision our students consistently achieving exceptional results and securing admission to the most esteemed institutions worldwide.

YOUR GATEWAY TO EXCELLENCE IN IIT-JEE, NEET AND CBSE EXAMS

- 7. Exam Preparation:** Special focus is given to exam preparation strategies, including time management techniques, revision schedules, and practice sessions. Mock exams simulating the IIT-NEET-CBSE board pattern are conducted to familiarize students with the exam conditions.
- 8. Holistic Development:** Beyond academics, our study the module emphasizes holistic development by encouraging participation in extracurricular activities, seminars, workshops, and community service initiatives.

CLASSROOM:

At our institute, we prioritize creating an optimal learning environment for our students. Our campus is fully equipped with state-of-the-art facilities, including a fully WiFi-enabled environment and disciplined small classroom sizes. Each classroom is equipped with advanced technical devices, such as large display monitors, to enhance the learning experience for students. These monitors serve as valuable tools for visual aids, interactive learning sessions, and real-time demonstrations, allowing students to engage with the curriculum in a dynamic and immersive manner. With our commitment to providing top-notch facilities and resources, we ensure that students have every opportunity to upgrade themselves and excel in their academic pursuits.





YOUR GATEWAY TO EXCELLENCE IN IIT-JEE, NEET AND CBSE EXAMS

OUR RESULTS:



At AEP Study Circle, we take pride in our consistent track record of achieving record-breaking results year after year. Our commitment to excellence, dedication to student success, and innovative teaching methodologies have consistently propelled our students to new heights of academic achievement. Our team of experienced and highly qualified faculty members bring a wealth of knowledge, expertise, and passion to the classroom. Their dedication to teaching excellence and student mentorship plays a pivotal role in helping our students achieve exceptional results.



TEST SERIES:

Our institute offers a comprehensive test series program designed to supplement regular classroom teaching and enhance students' exam preparedness for IIT-JEE-NEET-CBSE board examinations. The test series is meticulously crafted to provide students with ample practice, feedback, and performance evaluation.

Key Features:

- 1. Subject-wise Tests:** The test series includes subject-wise tests covering all subjects of the IIT-JEE-NEET-CBSE curriculum for classes, including Physics, Chemistry, Biology, Mathematics, English, and elective subjects.
- 2. Chapter-wise Coverage:** Each subject test covers specific chapters or topics as per the CBSE syllabus, ensuring comprehensive coverage and targeted practice for every concept.
- 3. Varied Question Formats:** The tests comprise a mix of multiple-choice questions (MCQs), short answer questions (SAQs), long answer questions (LAQs), and assertion-reasoning type questions, reflecting the diverse question formats encountered in CBSE board exams.
- 4. Timed Assessments:** Tests are conducted under timed conditions to simulate the exam environment and help students practice time management skills, ensuring they can complete the paper within the stipulated time frame.
- 5. Performance Analysis:** Detailed performance analysis is provided to students after each test, highlighting their strengths and areas for improvement. This feedback helps students identify their weaknesses and focus on targeted revision.
- 6. Ranking System:** Students' performance is ranked and compared with their peers, motivating healthy competition and encouraging students to strive for continuous improvement.





YOUR GATEWAY TO EXCELLENCE IN IIT-JEE, NEET AND CBSE EXAMS

OUR STRATEGY:

Strategic Approach: We adopt a strategic approach to academic preparation, focusing on comprehensive syllabus coverage, rigorous practice, and targeted exam strategies. Our structured study plans and meticulously designed curriculum ensure that students are well-prepared to excel in their exams.

We understand that each student is unique, with their own strengths, weaknesses, and learning styles. That's why we provide personalized attention to every student, offering individualized support, guidance, and feedback to help them reach their full potential.



7. **Feedback and Doubt Resolution:** Dedicated sessions are conducted to provide feedback on students' performance and address their doubts and queries. Experienced faculty members offer personalized guidance and support to help students overcome challenges.
8. **Revision Strategy:** The test series is integrated with a comprehensive revision strategy, ensuring that students revisit and reinforce key concepts before the final board AND competitive examinations.

➤ MOTIVATIONAL SESSIONS

At our institute, we believe in nurturing not only academic excellence but also fostering strong motivational and parent-student relationships. We regularly organize motivational sessions aimed at inspiring students to reach their full potential, set ambitious goals, and overcome challenges with resilience and determination. These sessions feature guest speakers, successful alumni, and renowned experts who share their insights, experiences, and strategies for success. Additionally, we place great emphasis on strengthening the bond between parents and students through dedicated relationship-building sessions. These sessions provide a platform for open communication, mutual understanding, and collaborative problem-solving between parents, students, and faculty members. Through constructive dialogue, feedback sharing, and goal-setting discussions, we aim to cultivate a supportive and nurturing environment where students can thrive academically and personally. By promoting positive relationships and a motivating atmosphere, we empower our students to achieve their aspirations and excel in all aspects of their lives."



**YES
you
CAN**





YOUR GATEWAY TO EXCELLENCE IN IIT-JEE, NEET AND CBSE EXAMS



➤ SUCCESS STORY

Join a community of achievers and become part of our success stories. Many of our students have successfully cracked the IIT-JEE, NEET, and CBSE exams, securing positions in reputed institutions.

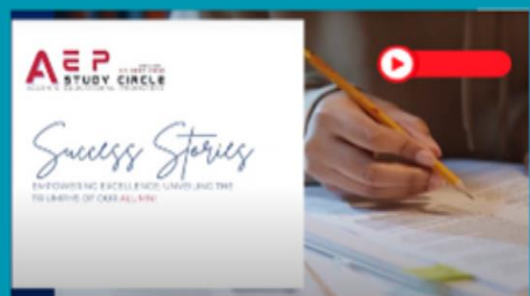
Key Highlights: AEP STUDY CIRCLE ON YOUTUBE

1. **Student Achievements:** Our YouTube channel features captivating success stories of students who have achieved remarkable success in their academic pursuits. From securing top ranks in competitive exams to overcoming challenges and realizing their dreams, each story is a testament to their hard work and determination.
2. **Diverse Profiles:** The success stories on our YouTube channel represent a diverse range of students from different backgrounds, regions, and academic interests. Whether it's a student from a small town or a metropolitan city, each story is unique and inspiring in its own way.
3. **Motivational Narratives:** Through compelling narratives and interviews, we delve into the personal journeys, struggles, and triumphs of our students. These stories not only celebrate their achievements but also serve as a source of motivation and inspiration for aspiring students.
4. **Parental Testimonials:** In addition to student testimonials, our YouTube channel also features testimonials from proud parents who share their experiences, emotions, and insights into their child's academic journey. Their unwavering support and encouragement play a crucial role in shaping the success stories.
5. **Expert Guidance:** Alongside student testimonials, our channel offers expert advice, tips, and strategies from experienced faculty members and mentors. These insights provide valuable guidance to students on exam preparation, time management, and overcoming challenges.



SUBSCRIBE

Continuous Improvement: We are committed to continuous improvement and innovation in all aspects of our academic programs. Through ongoing evaluation, feedback mechanisms, and professional development initiatives, we strive to stay ahead of the curve and deliver the highest quality education to our students.



SUBSCRIBE





PARENTAL ENGAGEMENT:

We recognize the importance of parental involvement in a student's academic journey. Through regular communication, parent-teacher meetings, and collaborative partnerships, we ensure that parents are actively engaged in their child's education, providing support and encouragement every step of the way.



YOUR GATEWAY TO EXCELLENCE IN IIT-JEE, NEET AND CBSE EXAMS

Impact and Outreach: The success stories featured on our YouTube channel have garnered widespread recognition and appreciation from viewers across the globe. They have inspired countless students to pursue their academic goals with renewed vigor and determination. Additionally, the channel serves as a platform for sharing valuable knowledge and fostering a sense of community among students, parents, and educators.

Join Us: Subscribe to our YouTube channel and be inspired by the extraordinary success stories of our students. Witness their journey of determination, resilience, and triumph as they embark on the path to academic excellence.

YouTube Channel Link: [AEP Study Circle YouTube Channel](https://www.youtube.com/@AEPSTUDYCIRCLE)



<http://youtube.com/@AEPSTUDYCIRCLE>

Embark on a Journey of Inspiration: Watch, learn, and be motivated by the success stories of our students on the AEP Study Circle YouTube channel. Join us in celebrating their achievements and paving the way for a brighter future in education.



CAREER-COUNSELLING

Receive expert guidance on career paths, higher education options, and exam strategies. Our career counseling services are designed to empower you to make informed decisions about your future.





YOUR GATEWAY TO EXCELLENCE IN IIT-JEE, NEET AND CBSE EXAMS

JOIN US IN ACHIEVING EXCELLENCE:

At AEP Study Circle, we believe that every student has the potential to achieve greatness. With our unwavering commitment to excellence, supportive learning environment, and proven track record of success, we empower students to realize their dreams and surpass even their own expectations.

JOIN US IN BUILDING A BRIGHTER FUTURE:

As we embark on this transformative journey, we invite students, parents, educators, and partners to join us in realizing our vision of excellence, innovation, and impact. Together, let us inspire minds, nurture talents, and shape a future where every individual has the opportunity to thrive and make a meaningful difference in the world..

➤ ACCESSIBLE ANYTIME, ANYWHERE

You can access the STUDYmodule/MOCK TEST REVISIONMODULE, online whenever you can. The digital platform offers flexibility for efficient and personalized revision, allowing you to tailor your study schedule for optimal modules online at your convenience. The digital platform offers flexibility for efficient and personalized revision, allowing you to tailor your study schedule for optimal results.



Join A E P Study Circle and experience a transformative learning journey that prepares you for success in IIT-JEE, NEET, CBSE-BOARD and CBSE-SCHOOL exams and beyond!

➤ ADMISSION-CUM-REGISTRATION FORM

QR CODE:



LINK:

<https://forms.gle/YRJKmXrRFfJgvsWR6>





YOUR GATEWAY TO EXCELLENCE IN IIT-JEE, NEET AND CBSE EXAMS

CELEBRATING OUR

Accomplished A E Pians!!

ONLINE-OFFLINE LEARNING ACADEMY



SCIENTIST



Ph.D.



DOCTOR



ENGINEER



MANAGER



BANK PO



MERCHANT
NAVY OFF



CHARTED
ACCOUNTANT

ABHISHEK KR

NIT [2001-04]

CBSE X: 89%
CBSE XII: 88%
SOFTWARE ENGINEER



RAHUL SINGH

[2001-04] MIT

CBSE X: 88%
CBSE XII: 90%
SOFTWARE ENGINEER



PRIYANKA

NIT [2001-04]

CBSE X: 86%
CBSE XII: 87%
SOFTWARE ENGINEER



ANIMESH TIWARI

[2001-05] NIT

CBSE X: 88%
CBSE XII: 89%
SOFTWARE ENGINEER



HARISH S

[2001-02]

CBSE X: 85%
CBSE XII: 87%
BRANCH MANAGER



SAYAK DUTTA

[2003-07] NIT

CBSE X: 96%
CBSE XII: 95%
ELECTRICAL ENGINEER



Dr. SUPRIYAM

BVP PUNE [2003-07]

CBSE X: 90%
CBSE XII: 92%
DOCTOR



SHASHIKANT B

[2003-07] IIT

CBSE X: 97.4%
CBSE XII: 96%
SOFTWARE ENGINEER



ABHAY SINGH

BIT [2003-07]

CBSE X: 96%
CBSE XII: 94%
USA
MECHANICAL ENGINEER



PRATYESH MISHRA

[2003-07] BIT

CBSE X: 93%
CBSE XII: 92%
SOFTWARE ENGINEER



Dr. PRITY KRI

MIT [2006-10]

CBSE X: 90%
CBSE XII: 91%
GERMANY
Ph D. - M-TECH



Dr. SHREETA KRI.

[2006-10] ISM

CBSE X: 91%
CBSE XII: 90%
Ph D. - M-TECH





YOUR GATEWAY TO EXCELLENCE IN IIT-JEE, NEET AND CBSE EXAMS

CELEBRATING OUR Accomplished A E Pians!!

ONLINE-OFFLINE LEARNING ACADEMY



SCIENTIST



Ph.D.



DOCTOR



ENGINEER



MANAGER



BANK PO



MERCHANT
NAVY OFF



CHARTED
ACCOUNTANT

Dr. ROHIT KR,

BIT-MESHRA [2008-10]

CBSE X: 88%
CBSE XII: 87%
Ph D. - M-TECH



T
W
I
N
S

Dr. RAHUL KR,

[2008-10] DELHI

CBSE X: 84%
CBSE XII: 88%
Ph D. - M-TECH



VIVEK SINGH

IIT [2004-09]

CBSE X: 90%
CBSE XII: 91%
M-TECH



AKASH KR

[2007-09] NIT

CBSE X: 86%
CBSE XII: 89%
SCIENTIST-DIRECTOR



DHANANJAY S

NIT [2007-10]

CBSE X: 90%
CBSE XII: 92%
ASST-MANAGER,
HIDUSTAN PETROLEUM



AWARDED-

DIGITAL WEB AWARD ,2018
ASST-DIRECTOR AT
MINISTRY OF ELECTRONICS
AND IT , GOVT. OF INDIA



POUSHALI M

NIT [2010-12]

CBSE X: 90%
CBSE XII: 95%
SOFTWARE ENGINEER



RASHMI KHANDELWAL

[2010-12]
C V RAMAN

CBSE X: 88%
CBSE XII: 89%
SOFTWARE ENGINEER



DINESH SINGH

[2005-10]

CBSE X: 96%
CBSE XII: 94%
MERCH. NAVY OFFICER
ANGLO-EARTERN GRP



R S MEHRA

[2003-07]

CBSE X: 83%
CBSE XII: 87%
ELECT. ENGINEER
ANGLO-EARTERN GRP



ANKIT RATH

[2013-15]

CBSE X: 90%
CBSE XII: 91%
IMU CHANNAI
MERCH. NAVY OFFICER



SHUBHAM PATHAK

[2013-15]

CBSE X: 87%
CBSE XII: 88%
NAVIGATION OFFICER
PACIFIC INT. LINE





YOUR GATEWAY TO EXCELLENCE IN IIT-JEE, NEET AND CBSE EXAMS



CELEBRATING OUR Accomplished A E Pians!!



SCIENTIST



Ph.D.



DOCTOR



ENGINEER



MANAGER



BANK PO



MERCHANT
NAVY OFF



CHARTED
ACCOUNTANT

PRATHAM KR,

[2016-18]

CBSE X: 88%
CBSE XII: 89%

IMU CHANNAI
MERCH. NAVY OFFICER



VISHAL GUPTA

[2006-10] IIT-MUMBAI

CBSE X: 89%
CBSE XII: 91%

IIM KOLKATA
MECHANICAL ENGG



SHAYAN M

[2007-10]

CBSE X: 90%
CBSE XII: 92%

SOFTWARE ENGINEER



PIYUSH KISHORE

[2009-11]

CBSE X: 83%
CBSE XII: 85%

SECTION OFFICER, EPFO
LABOUR MINISTRY



PIKESH PR.

[2008-10]

CBSE X: 90%
CBSE XII: 91%

SOFTWARE ENGINEER



ROUNAG NAG

[2006-10]

CBSE X: 81%
CBSE XII: 87%

BRANCH MANAGER
PNB



AJAY TOPPO

[2006-10]

CBSE X: 89%
CBSE XII: 92%

BRANCH MANAGER
BOI



AASTHA TIWARY

[2008-12] LNCT

CBSE X: 88%
CBSE XII: 89%
SOFTWARE ENGINEER
TCS



RASHMI D

[2009-12]

CBSE X: 88%
CBSE XII: 89%

SOFTWARE ENGINEER
ACCENTURE



PAYAL AG.

[2009-10]

CBSE X: 92%
CBSE XII: 91%

C A



Dr. P.KUMAR

[2001-03]

CBSE X: 84%
CBSE XII: 86%

Ph.D



RAMESH PD

[2001-03] NIT

CBSE X: 86%
CBSE XII: 89%
SYSTEM ENGINEER
TCS





YOUR GATEWAY TO EXCELLENCE IN IIT-JEE, NEET AND CBSE EXAMS

CELEBRATING OUR Accomplished A E Pians!!



SCIENTIST



Ph.D.



DOCTOR



ENGINEER



MANAGER



BANK PO



MERCHANT
NAVY OFF



CHARTED
ACCOUNTANT

Y. SANTOSH

GIET [2001-03]
CBSE X: 83%
CBSE XII: 87%
Principal SAS
Programmer



RAASHI AGAWAL

[20012-14]
CBSE X: 90%
CBSE XII: 95%
C A



NIWASH S

HIT [2004-07]
CBSE X: 84%
CBSE XII: 89%
SOFTWARE ENGINEER
ORACLE



ANSHU JAISWAL

[2004-07]
CBSE X: 82%
CBSE XII: 87%
ADITYA BIRLA GRP
SR.MANAGER



RAHUL SINGH

[2013-15]
CBSE X: 87%
CBSE XII: 90%
LIEUTENANT, ARMY



KANWAR P S GILL

[2014-16]
CBSE X: 81%
CBSE XII: 87%
SOFTWARE ENGINEER
CANADA



PRATEEK A

R V [2014-16]
CBSE X: 90%
CBSE XII: 94%
SOFTWARE ENGINEER
CISCO



HEMANT SINGH

[2008-12]
CBSE X: 84%
CBSE XII: 87%
MERCH. NAVY OFFICER



HRIJUSHA S

SIT [2013-16]
CBSE X: 92%
CBSE XII: 94%
SOFTWARE ENGINEER
ACCENTURE



ANUPAMA MONDAL

[2012-14] BC ROY
CBSE X: 87%
CBSE XII: 90%
SOFTWARE ENGINEER
AMAZON



SIMAR PREET

[2012-14]
CBSE X: 84%
CBSE XII: 88%
Symbiosis College



SWATI AGRAWAL

[2012-14]
CBSE X: 86%
CBSE XII: 90%
QUALITY ANALYST
OFFICE, MINDTREE





YOUR GATEWAY TO EXCELLENCE IN IIT-JEE, NEET AND CBSE EXAMS

CELEBRATING OUR Accomplished A E Pians!!

ONLINE-OFFLINE LEARNING ACADEMY



SCIENTIST



Ph.D.



DOCTOR



ENGINEER



MANAGER



BANK PO



MERCHANT
NAVY OFF



CHARTED
ACCOUNTANT

SHRUTI AG.

LNCT [2014-16]
CBSE X: 87%
CBSE XII: 90%
SOFTWARE ENGINEER,
COGNIZANT



Dr. SUPRIYA SINGH

[2012-14]
CBSE X: 90%
CBSE XII: 92%
MBBS S M COLLEGE



ABHISHEK J

VTU [2008-11]
CBSE X: 84%
CBSE XII: 89%
SOFTWARE ENGINEER
U A E



PRAGATI GUPTA

[2008-14] NIT
CBSE X: 90%
CBSE XII: 91%
SOFTWARE ENGG,



ANNU KRI.

NIT [2008-12]
CBSE X: 88%
CBSE XII: 92%
SYSTEM ENGG., PWC



HARSHITA S

[2008-12]
CBSE X: 90%
CBSE XII: 91%
SOFTWARE ENGINEER
DELOITTE.US-IND



SHAHIL RAVI

NIT [2014-16]
CBSE X: 90%
CBSE XII: 94%
MANAGEMENT TRAINEE
BALAJEE GRP



AKSHAT AGARWAL

[2015-19] IIT, MUM
CBSE X: 94%
CBSE XII: 91%
MERCHANT ENGG.



NIKHIL BANSAL

IIT KANP. [2015-17]
CBSE X: 97%
CBSE XII: 95%
SOFTWARE ENGINEER
SINGAPORE



ASHISH KUMAR

[2011-15] I E M
CBSE X: 87%
CBSE XII: 90%
SOFTWARE ENGINEER
INFOSYS



JOYDEEP P

[2015-19]
CBSE X: 90%
CBSE XII: 91%
SOFTWARE ENGINEER
DELL, BANGLORE



DR. VIDYA BHARTI

[2014-16]
CBSE X: 89%
CBSE XII: 91%
MBBS, MGM
JAMSHEDPURA





YOUR GATEWAY TO EXCELLENCE IN IIT-JEE, NEET AND CBSE EXAMS

CELEBRATING OUR Accomplished A E Pians!!



SCIENTIST



Ph.D.



DOCTOR



ENGINEER



MANAGER



BANK PO



MERCHANT
NAVY OFF



CHARTED
ACCOUNTANT

Dr. NANCY R.J.

[2010-14]

CBSE X: 10 CGPA

CBSE XII: 94%

PURSING Ph.D.



M Sc.:
1ST CL DISTICTION.
MOUNT CARMEL
BANGALURU

Qualified GATE
XL life sciences

Qualified joint CSIR-UGC NET
JRF - 99.09 percentile, AIR - 133

SURAJ PD.

[2013-16]

KIT

CBSE X: 10 CGPA

CBSE XII: 93%

SOFTWARE ENGG



AYUSH DUTTA

[2014-17]

BIT

CBSE X: 86%

CBSE XII: 89 %

SOFTWARE ENGG,



PRERNA P

SCHOOL TOPPER

NIT ROURK [2011-15]

CBSE X: 90%

CBSE XII: 95%

SYSTEM ENGG., TCS

COLLEGE TOPPER



SAURABH GUPTA

[2008-12]

NIT

CBSE X: 89%

CBSE XII: 90%

SOFTWARE ENGINEER

BANGLORE



RISABH AG.

GITA [2014-16]

CBSE X: 88%

CBSE XII: 86%

MECHANICAL ENGG



AMIT AMAN

[2008-11] NIT,JSR

CBSE X: 83%

CBSE XII: 89%

MECHANICAL ENGG.



SANDHYA RANA

NIT KRUK. [2003-07]

CBSE X: 84%

CBSE XII: 85%

United Nations

Development Programm



PURUSHOTAM

[2007-10] GITA

CBSE X: 87%

CBSE XII: 90%

SOFTWARE ENGINEER

MINISTRY OF HEALTH



PRIYANKA S

[2003-06]

CBSE X: 82%

CBSE XII: 84%

BANK PO

BANK OF INDIA



SWEETY AYAN

[2007-11]

CBSE X: 86%

CBSE XII: 87%

SENIOR SYSTEM ENGG

JINFOSYS BANG.





YOUR GATEWAY TO EXCELLENCE IN IIT-JEE, NEET AND CBSE EXAMS

CELEBRATING OUR Accomplished A E Pians!!

ONLINE-OFFLINE LEARNING ACADEMY



SCIENTIST



Ph.D.



DOCTOR



ENGINEER



MANAGER



BANK PO



MERCHANT
NAVY OFF



CHARTED
ACCOUNTANT

ABHINAV A

MSR [2008-10]
CBSE X: 80 CGPA
CBSE XII: 93%
PTEAM HEAD - AMDOCS,
BANGALURU



VISHAL THAKUR

[2010-14] GITA
CBSE X: 10 CGPA
CBSE XII: 93%
MECHANICAL ENGG



BHUPENDRA

GIMT [2007-11]
CBSE X: 82%
CBSE XII: 86 %
EXECUTIVE AT AIR
ASTANA AIRLINE



KUNAL JHA

[2010-12] BIT
CBSE X: 87%
CBSE XII: 85 %
SENIOR SOFTWARE
ENGG.



AMAN SINGH

BIT [2009-11]
CBSE X: 81%
CBSE XII: 82%
SNETWORKING ENGG
NOKIA-SEIMENS



MAYANK S

[2008-12] BIT
CBSE X: 89%
CBSE XII: 88%
SOFTWARE ENGINEER
BANGLORE



UJJAWAL S

B C ROY [2008-10]
CBSE X: 88%
CBSE XII: 86%
SOFTWARE ENGINEER
BANGALORE



VISHNU RANA

[2008-11] C V RAMAN
CBSE X: 83%
CBSE XII: 82%
MECHANICAL ENGG.



PAWAN KUMAR

NIT KRUK. [2009-11]
CBSE X: 86%
CBSE XII: 87%
PROJECT ENGINEER
WIPRO TECHNOLOGIES



ANAND SUMMER

[2009-11] NIT
CBSE X: 89%
CBSE XII: 90%
SOFTWARE ENGINEER
BANGALORE



SHREYA DUTTA

IIT [2006-09]
CBSE X: 86%
CBSE XII: 89%
SOFTWARE ENGINEER
WIPRO, PUNE



DHEERAJ SINGH

[2007-11]
CBSE X: 82%
CBSE XII: 83%
REGIONAL MANAGER
T S G, KOLKATA





YOUR GATEWAY TO EXCELLENCE IN IIT-JEE, NEET AND CBSE EXAMS

CELEBRATING OUR Accomplished A E Pians!!

ONLINE-OFFLINE LEARNING ACADEMY



SCIENTIST



Ph.D.



DOCTOR



ENGINEER



MANAGER



BANK PO



MERCHANT
NAVY OFF



CHARTED
ACCOUNTANT

SIDHARTHA G

MSR [2013-17]
CBSE X: 10 CGPA
CBSE XII: 90%
MECHANICAL ENGG
PUNE



RONIT RATAN

[2010-14] PIET
CBSE X: 10 CGPA
CBSE XII: 88%
SOFTWARE ENGINEER
COGNIZANT ,BANGL



RONIT J

[2017-21]
CBSE X: 88%
CBSE XII: 87 %
JEE MAINS 2021
PURSUING B-TECH



TRIPTI MANDAL

[2017-21]
CBSE X: 87%
CBSE XII: 85 %
JEE MAINS 2021
PURSUING B-TECH



VISHAL UP.

BIT [2013-16]
CBSE X: 86%
CBSE XII: 89%
SOFTWARE ENGINEER
TCS , NOIDA



SHRUTI AGRAWAL

[2018-21]
CBSE X: 96%
CBSE XII: 98%
COMMERCE
DISTRICT TOPPER



AYEASHA

[2020-22]
CBSE X: 94%
CBSE XII: 94.5%
JEE MAINS 2022 ,CUET
PURSUING B-TECH



SUHAN SINHA

[2020-22]
CBSE X: 90%
CBSE XII: 91%
NEET 2022
PURSUING B-PHARM



SHUSHMITA

NIT KRUK. [2019-21]
CBSE X: 92%
CBSE XII: 94%
JEE MAINS 2021 ,CUET
PURSUING B-TECH



PRIYANSHU P
DISTRICT TOPPER

[2021-23]
CBSE X: 89%
CBSE XII: 97%
JEE MAINS /ADV 2023-24
PERCENTILE:99.05



YAASHITA

[2017- 23]
CBSE X: 95%
CBSE XII: 92.5%
JEE MAINS /ADV 2023
COMED-K
UNIVERSITY TOPPER



PURAB JAIN

[2021-23]
CBSE X: 92%
CBSE XII: 91.5%
JEE MAINS /ADV 2023



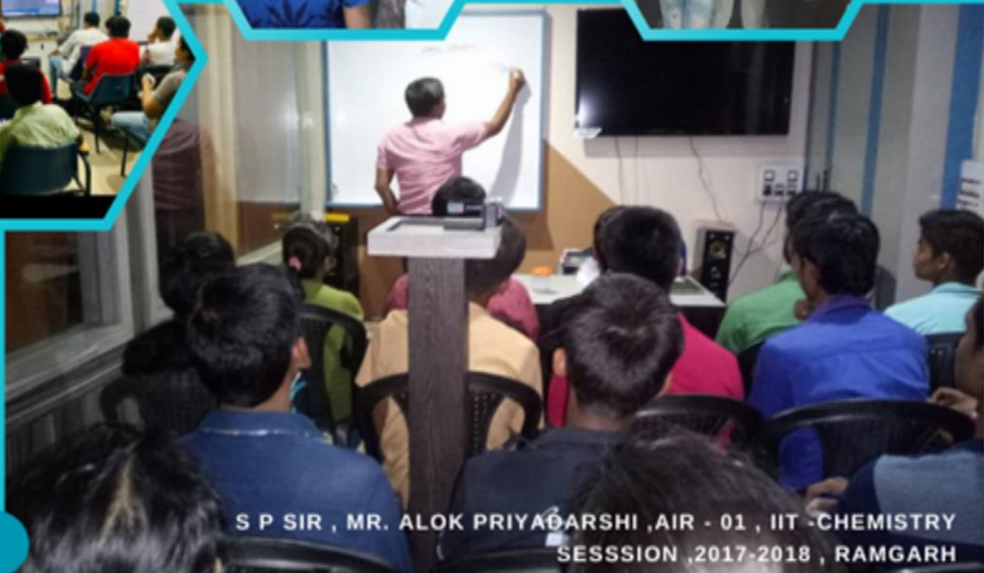


YOUR GATEWAY TO EXCELLENCE IN IIT-JEE, NEET AND CBSE EXAMS



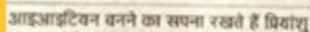
GLIMPSES....

It's indeed a testament to the caliber of our students that **Mr. Alok Priyadarshi, Superintendent of Police in Ramgarh**, dedicated his valuable time to conduct sessions with them from 2017 to 2018. His involvement speaks volumes about the reputation and excellence of our institute, as well as the commitment of our students to their learning and growth. We are immensely proud of this association and grateful for the knowledge and inspiration imparted by Mr. **Alok Priyadarshi** during his tenure with us.





The media coverage of A EP Study Circle has been extensive and widely recognized, reflecting our institute's commitment to excellence in education and outstanding achievements in various competitive AND CBSE - exams.



छात्रों ने 10वीं व 12वीं में किया शानदार प्रदर्शन

सामग्र्य। सीबीएसई 10वीं व 12वीं के परीणाम में एईपी स्टडी सेंकल के छात्रों ने अत्यंत प्रदर्शन किया है। 10वीं में अभ्युदय अग्रवाल ने 96.5%, मिर्झा जैन 94.5%, अर्पित अग्रवाल 94.6%, अंशुमन मिश्रा 91% सहित अन्य छात्रों ने अच्छे अंक लाए हैं। वहीं 12वीं में प्रियांशु प्रियदर्शी 97%, याशीत 91%, पूरब जैन 91% व आसिता हुसैन 90.2% अंक लाकर संस्थान का नाम ऊंचा किया किया। इसके अलावा अन्य छात्रों का प्रदर्शन भी शानदार रहा।



एड्डी स्टडी सर्किल के विद्यार्थियों का उत्कृष्ट प्रदर्शन

[illegible]

जेईई एडवांस में सफलता

संसू. बरखाकाशः खीरती सरकाकाका को हो
 डाउन साहित कुमार रवि व आकाश कुमार ने
 जेईई एचबीस में सम्मिलित कर अपने
 क्षेत्र व स्कूल का नाम रोजान किया है। वे इस
 वर्ष 2015-16 में पास आउट हुए हैं। इसमें
 साहित कुमार रवि को अंश ओवर टूटव में
 149अव्यं व आकाश कुमार सिंह ने 247अव्यं
 के प्राप्त किया है।



अक्षरल कुम्हार। **राशिल कुम्हार ली।**
 दिया है। उनके पिता साधनारवण राम पेरो से
 बचल है। उनकी सफलता पर खुल
 प्राणाई सह सेबीष निर्दिनाक ने उनके
 केडार भविष्य को कामना की। साथ ही हाथ
 की यदि ईमानदारी से पूरे लगन के साथ
 पदार्थ की जाए तो हर हाल में सफल
 मिलती है।

हेन्दुस्तान

हलचल

जेईई एडवांस में साहिल ने लहराया परचम

रामगढ़। सीबीएसई की जेईई एटवांस 2016 की परीक्षा में आवेक्सआईआईटीएस संस्था के सहितल कुमार खन्नि ने परचम लहराया। उसने 1494 बैंक प्राप्त कर माता-पिता का नाम रोशन किया। सहितल इसी वर्ष डीएईई बरकाकाना से 12वीं की परीक्षा पास की थी। यह पिछले दो वर्षों से आवेक्सआईआईटीएस में पढ़ रहा है। संस्था निदेशक पुन सिन्हा और डीएईई प्राचार्य संहिता सिंह ने सहितल की सफलता पर बधाई दी।

एडपी स्टडी सर्किल का रिजल्ट शत प्रतिशत



25.09.2016 : दोपहर 12वीं को पुलिस ने तीन बार सड़क लाइनों पर जाम लगाकर जामों के बीच से निकल चुकी दहली पुलिस ने विधिवत अड्डा खोलना शुरू कर दिया। गेटवॉन सड़क के गलत के विधिवत मुकदमों के 20 सड़कियों दहली दहली पुलिस ने सड़कियों को ले जाने की विधिवत प्रणाली से जामों को हटा दिया।

छात्र जेड्ड मेंस में सफल

रामगढ़, सतकौड़ी कॉम्प्लेक्स स्थित शैक्षणिक संस्था आक्स
आइआइटिंस के नौ छात्रों ने सफलता हासिल की है।



संस्था के निदेशक एन सिन्हा ने तथा संस्था के सीईओ आदिल सिंगल ने सफल होने वाले छात्र-छात्राओं को बधाई दी है। निदेशक एन सिन्हा ने बताया कि सफल छात्र-छात्राओं को जेड एडवेंस की तैयारी के लिए 60 घंटों की स्पेशल कोचिंग दी जायेगी। संस्था के निदेशक ने कहा है कि अगर छात्र-छात्रा कोचिंग तो ये संस्था के बाहर जाकर कोचिंग ले सकते हैं।

एन सिन्हा ने बताया कि संस्थान के सफल छात्र-छात्राओं में प्रतीक को जेनरल में 122 रैंक, विवेक राज को ओबीसी में 120 रैंक, अंशु कुमार को ओबीसी में 107 रैंक, रिजुशा अरविंद को जेनरल में 104 रैंक, ऋति मोरी को ओबीसी में 100 रैंक, अप्पेक कुमार को एससी में 95 रैंक, शाहिल को एससी में 59 रैंक, प्रागति रानी को ओबीसी में 64 रैंक तथा अंजली को ओबीसी में 52 रैंक हासिल हुए।

एडपी स्टडी के विद्यार्थियों का उत्कृष्ट प्रदर्शन

[illegible]

27 छात्र-छात्राओं ने 50वीं की परीक्षा दी थी, जहाँ वे अपना प्रतिष्ठित स्नातक कार्यक्रम का नाम रोलन मित्रा है। अन्त्येष्टि आयोजन ने 04.5 प्रतिशत, पिछले वर्ष ने 04.5 प्रतिशत, अर्द्धशत आयोजन ने 04 प्रतिशत तथा अंतुष्टार मित्राई ने 0 प्रतिशत और ताकत सम्मान ने 0 प्रतिशत किया है। छात्रों की प्रतिशत के पिछले 04 प्रतिशत ने छात्र-छात्राओं को अच्छी दी है।

प्रभात खबर
रांची, जमिना
13.05.2023

रामगढ

साइंस के जिला टॉपर बने प्रियांशु प्रियदर्शी



परिष्कार के साथ प्रिंटिंग

1999, 2000, 2001

[illegible]

एसेंट ट्यूटोरियल के छात्र-छात्राओं का उत्कृष्ट प्रदर्शन





YOUR GATEWAY TO EXCELLENCE IN IIT-JEE, NEET AND CBSE EXAMS

MEDIA COVERAGE.....

The media coverage of AEP Study Circle has been extensive and widely recognized, reflecting our institute's commitment to excellence in education and outstanding achievements in various competitive AND CBSE - exams.



प्रातिमा खोज परीक्षा आयोजित



रामगढ़, भोजपुर (संघ प्रेस) की शैक्षणिक संस्था आइआईटी ने शहर के रामगढ़ में प्रतिमा खोज परीक्षा आयोजित की। प्रतिमा खोज परीक्षा का आयोजन मुख्य चोकर के छात्रों के लिए है।

आइआईटी के प्राचार्य डॉ. राजेश कुमार शर्मा ने बताया कि प्रतिमा खोज परीक्षा का आयोजन मुख्य चोकर के छात्रों के लिए है। प्रतिमा खोज परीक्षा का आयोजन मुख्य चोकर के छात्रों के लिए है।

जेईई एडवांस : रांची का अमल झारखंड टॉपर

रांची। हिन्दुस्तान टाइम्स

संयुक्त प्रवेश परीक्षा (जेईई) एडवांस-2017 का रिजल्ट शनिवार को जारी किया गया। इसमें झारखंड के विद्यार्थियों ने अच्छा प्रदर्शन किया है।

नाम	रैंक	रैंक
अमल प्रसाद	रांची	49
अमल प्रसाद	रांची	101
अमल प्रसाद	रांची	120
अमल प्रसाद	रांची	139
अमल प्रसाद	रांची	143
अमल प्रसाद	रांची	150
अमल प्रसाद	रांची	156
अमल प्रसाद	रांची	172
अमल प्रसाद	रांची	183
अमल प्रसाद	रांची	190

गरीब छात्र नहीं रहेंगे उच्च शिक्षा से वंचित: निदेशक

■ आसक आइआईटीएस सैंट द्यूटोरियल शिक्षण संस्थान अध्यक्ष डॉ. राजेश कुमार शर्मा ने कहा कि गरीब छात्रों को उच्च शिक्षा से वंचित नहीं रहने देना है।

डॉ. राजेश कुमार शर्मा ने कहा कि गरीब छात्रों को उच्च शिक्षा से वंचित नहीं रहने देना है।

एसईट के विद्यार्थियों ने लहराया परचम

संस, रामगढ़ : सीबीएसई 10 वी की परीक्षा में थाना चौक सतकोडी के विद्यार्थियों ने परचम लहराया है।

साहिल व आकाश एडवांस में सफल

संस्कृत, रांची। आइआईटीएस सैंट द्यूटोरियल शिक्षण संस्थान के विद्यार्थियों ने परचम लहराया है।

डॉ. राजेश कुमार शर्मा ने कहा कि गरीब छात्रों को उच्च शिक्षा से वंचित नहीं रहने देना है।

डॉ. राजेश कुमार शर्मा ने कहा कि गरीब छात्रों को उच्च शिक्षा से वंचित नहीं रहने देना है।

डॉ. राजेश कुमार शर्मा ने कहा कि गरीब छात्रों को उच्च शिक्षा से वंचित नहीं रहने देना है।



YOUR GATEWAY TO EXCELLENCE IN
IIT-JEE, NEET AND CBSE EXAMS



**IIT-NEET-NDA
FOUNDATION
COURSES**

FREE

**IIT-JEE
NEET**

2-YEARS CLASSROOM

**CBSE
XIITH-XITH**

1-YEARS CLASSROOM

**CBSE
XTH-IXTH**

1-YEARS CLASSROOM

**CBSE
VIIIITH-VIITH**

1-YEARS CLASSROOM

